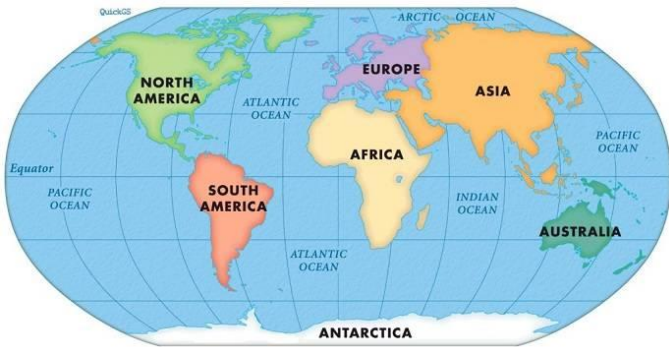


What a Wonderful World.



Geography

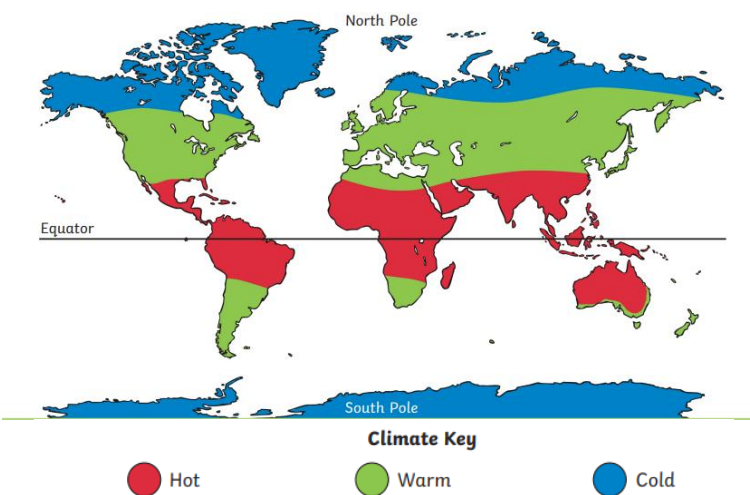


Recap of Year 1 learning:

There are 7 continents and 5 oceans in the world. Can you name them and find them on a World map?



Why do countries have different climates?



Hot climates:

The weather on the equator is hot all year round because the sun hits most directly on the Equator.

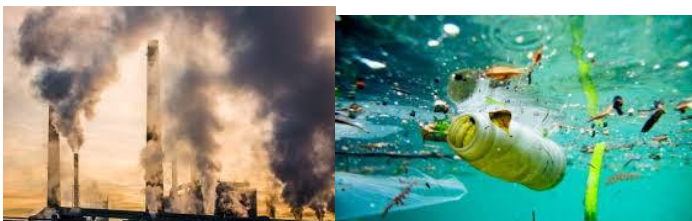
Cold climates:

Both the Arctic and the Antarctic are very cold because they get very little direct sunlight. The Sun is always low on the horizon, even in the middle of summer.

Warm temperate climates:

In the UK we live in a warm, temperate climate. A temperate climate doesn't experience extremes in temperature – not very hot or very cold, but unlike in the tropics, the temperature does vary at different times of year. Temperate climates usually experience seasons.

What impact have humans had on the environment?



Cutting down trees, burning fossil fuels, pollution and littering have a negative effect on animals and plants.

Protecting endangered species, cleaning lakes and seas, recycling and trying to use renewable energy have a positive effect on the environment.

Australia



Australia is the largest country in the continent of Australasia. It is found in the Southern Hemisphere and has coasts leading to 3 out of the 5 Oceans of the World. Its capital city is Canberra. Australia's seasons are at opposite times to those in the UK. Summer occurs in December and January while the coldest months are July and August.

Human features:
2 of the best known human features are Sydney Opera House and Sydney Harbour Bridge.



Physical features:
Some of the best known human features are The Great Barrier Reef and Uluru or Ayers Rock.



How does life in Australia differ from life in the UK?

As a result of the much warmer climate in Australia, people spend much more of their time outside. Christmas Day falls within their summer and people who live near to the coast often spend the day on the beach and have a BBQ. Australia also has lots of unique animals which are different to the animals we have in the UK, such as the kangaroo, koala, platypus and Tasmanian Devil.



Key Vocabulary	
Equator	An imaginary line that goes around the Earth and splits the Earth into 2 equal halves – the Northern and Southern Hemisphere.
Environment	The surroundings where a person, animal or plant lives
Climate change	Change in average conditions, such as rainfall or temperature.
Pollution	When something is added to the environment that is harmful or poisonous
Recycling	Taking materials that are ready to be thrown away and converting or using them for other things
Sustainability	Ensuring that a resource, such as water, can be maintained for as long as it is needed
Endangered	A species of animal or plant that is in danger of being gone forever (extinct)
Human feature	Things that have been created by humans eg. Roads, buildings, bridges.
Physical feature	A naturally existing feature – rivers, seas, mountains.

Enquiry questions.

Why do countries have different climates?

What impact have humans had on the environment?

How does life in Australia differ from life in the UK?