

*Play is our
brain's favourite
way of learning*

Diane Ackernman



Brooklands
Primary School

Early Years
Foundation Stage

HEYES





Introduction & Values

Welcome to Brooklands! Choosing a school for your child is an incredibly important decision and we feel privileged that you have chosen our school. At Brooklands, we are committed to fostering a love of learning, encouraging curiosity, and supporting the academic, social, and emotional growth of every pupil. Our dedicated team is here to ensure your child's school experience is enriching, safe, and memorable. We strive to create an inclusive community where every family feels welcomed and valued based on our 4 school values of Perseverance, Respect, Honest and Friendship.

Inside this brochure, you will find key information about our school's curriculum, extracurricular activities, and the various resources available to support your child's success. Additionally, we have included details about our communication channels, so you can stay informed and involved in your child's education.

Brooklands is an inclusive school and we pride ourselves on catering for the needs of all our pupils, including those who are neurodiverse. We embrace diversity and believe that every student brings unique strengths and perspectives to our community. Your child will have the opportunity to interact with and develop meaningful relationships with peers from diverse backgrounds, fostering a culture of understanding, empathy, and collaboration. Through these interactions, we aim to create a supportive environment where every student can thrive academically, socially, and emotionally.

We look forward to partnering with you to make this journey a successful one for your child. Thank you for choosing Brooklands and welcome to our family!

What will my child's day look like?

A typical day in Reception looks like this:

8.45am - 8.55am	Welcome at the door*
8.45am - 9.10am	Linked provision Register Daily routines
9.10am	Shared input
9.25am	Guided learning and continuous provision (indoors and out)
11.00am	Phonics
12.45pm	Lunch
12.55pm - 1.10pm	Register and snacktime (circle time)
1.10pm-1.20pm	Maths
1.20pm - 2.50pm	Guided learning and continuous provision (indoors and out)
2.50pm-3.15pm	Storytime / songs / celebration box and preparation for end of day.
3:15pm - 3:25pm	Collection from classroom doors*

*We ask that when arriving and collecting, you park and stride and avoid parking in the designated 'Red Zone' of Woodbourne, Derwent and half-way up Framingham.



Attendance

Children must attend school punctually every day. Gaps in attendance results in children falling behind as learning is planned and delivered as a sequence.

Arriving late results in a disrupted start for your child who may miss out on vital activities such as reading and draws attention to them. We have robust attendance management processes in place. Please **click here** for more information on these.

What will my child learn?

EYFS framework

At Brooklands Primary School, we focus on the seven areas of learning outlined in the Early Years Foundation Stage (EYFS) framework to ensure a well-rounded and comprehensive educational experience for your child.

The prime areas are Communication and Language, Physical Development, and Personal, Social, and Emotional Development. These areas are critical as they support learning in all other areas and are essential for igniting children's curiosity and enthusiasm for learning.

The specific areas are Literacy, Mathematics, Understanding the World, and Expressive Arts and Design. These build upon the prime areas, offering children opportunities to develop skills and knowledge in key subject areas. These 7 areas are used to plan your child's learning and activities.

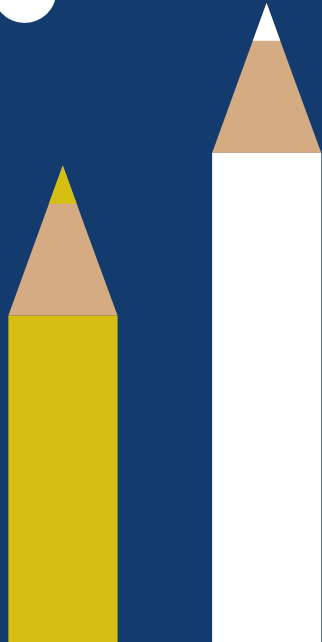
At Brooklands, our experienced EYFS teaching team ensure that tasks and challenges are suited to your child's unique

needs and interests. Children in the EYFS learn by playing and exploring, being active, and through creative and critical thinking. Our environment indoors and outdoors is continually enhanced with resources designed to scaffold and maximise learning.

Phonics & Early Reading

At Brooklands Primary School, we use the Little Wandle programme to teach phonics daily, ensuring our children develop strong reading and writing skills from an early age. More information can be found at <https://www.littlewandlelettersandsounds.org.uk/resources/for-parents/>

In addition to daily phonics, every child reads 3 times a week in class as part of a guided session. We send a decodable book home twice a week and we visit the school library once a fortnight. We ask you to read daily at home with your child, however we trust you to do this rather than requiring you to write in a reading record. If you/we have any concerns regarding your child's reading, this will be discussed in person.



What wider experiences will my child have at school?

We offer a broad and balanced curriculum for every child. In addition to this, we also provide a range of opportunities including a wide range of over 25 lunchtime and after-school clubs, external trips and in-school visitors, residential trips (Y5/6) and the opportunity to represent the school in sporting competitions. At Brooklands, children have the opportunity to learn a range of instruments via Trafford Music Services either 1:1 or part of a whole class (Y2/4/6) paid for by the PTA.



What should my child wear?

Please see a complete list of summer and winter uniform on our school website. Branded jumpers and book bags (no rucksacks due to size) are available via our designated supplier Petit Modes in Sale (link on website). However, you may purchase non-branded, cost-effective options in the same colour from other suppliers. The PTA also provide pre-loved items at various points throughout the year. Please also see PE kit on the website, which children wear to school on designated PE days. Children should not wear jewellery to school (only stud earrings), long hair must be tied up and hair bands/bows must be subtle. Please label all school clothes with your child's name.

School Uniform

www.petitesmodessale.com





What will my child eat? (snack and lunch)

Lunch

Every Reception – Y2 child is entitled to a free school meal. We offer an excellent selection of school lunches prepared on the premises. The daily choice always includes a meat or fish dish and a vegetarian dish. These are accompanied by a selection of fresh vegetables, salads and a choice of fruit or freshly made desserts. Parents select the meal remotely using the Evolve online system (details to follow). We ask you do this in conjunction with your child and make choices of foods you know they will eat. Alternatively, you may send your child to school with a packed lunch. See our Healthy Eating Policy with suggestions for packed lunches.

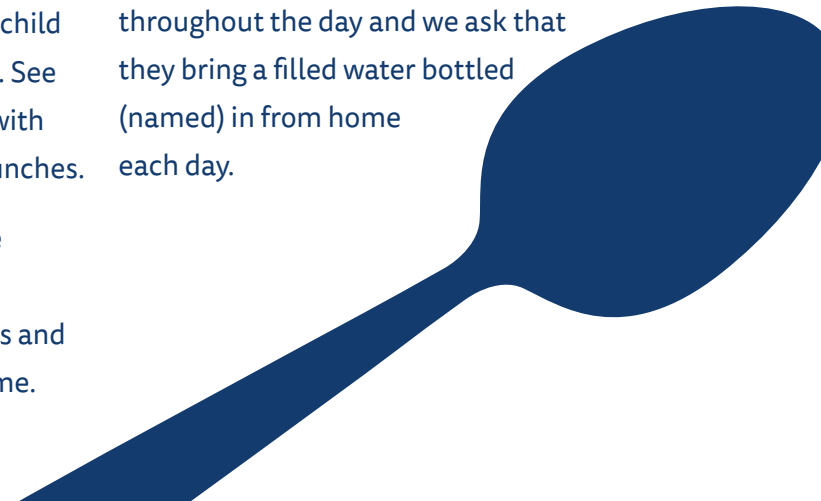
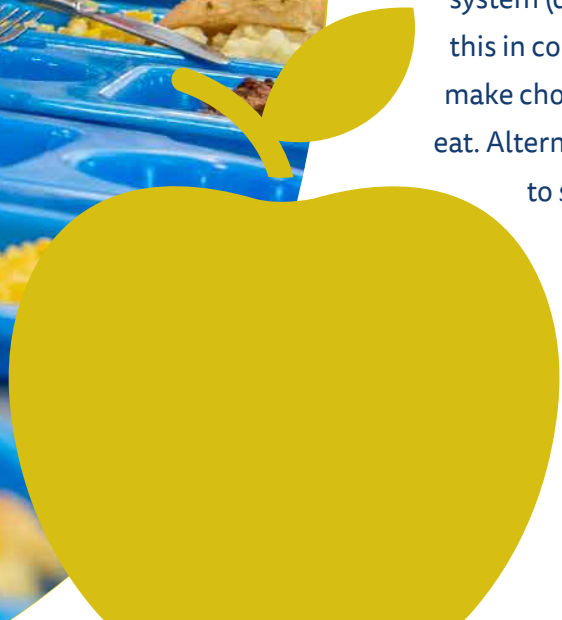
Teachers and lunchtime organisers support the children with their meals and afterwards during playtime.

Snack

At Brooklands Primary, we understand that snacks can play an important part of the diet of young people and can contribute positively towards a balanced diet. As part of our commitment to this, we take part in the National Fruit Scheme. This entitles every child under the age of seven to have a free piece of fruit each day. All Reception children receive this.

Drinks

Children are able to access drinking water throughout the day and we ask that they bring a filled water bottled (named) in from home each day.



How will I find out how my child is getting on?

We provide many opportunities for parents and carers to take an active part in their child's education and find out about their progress. These include:

- Teaching staff are available at the beginning and end of every school day at the classroom door for informal updates
- Our Official Brooklands Primary School App has its own internal social-media style newsfeed to keep you up-to-date with activities, events and reminders
- Brooklands Bulletin is sent weekly including the 'Focus on Learning' which summarises the learning completed that week and looks forward to the following week with links to learning beyond the classroom at home
- Access to EARWIG online learning journal with real time classroom observations carried out by teachers

- Class visits in Autumn and Spring term where you can see your child's classroom environment and learning
- Interim reports – in the Autumn and Spring term, you will receive a summary of your child's attainment across all 17 areas
- Virtual parent conference in spring where you can discuss your child's learning remotely, linked to the interim report.
- End of year pupil report based on your child's progress across the year
- EYFS Profile is a statutory national assessment completed at the end of the summer term.

At any point throughout the year, you can arrange to meet your child's teacher or have a discussion via telephone by contacting the school on secretary@brooklands.trafford.sch.uk





What can I do if I have any worries or questions?

In addition to the above reporting arrangements, if you have any questions please speak with us! We have staff available on the door at the start and end of every day. You can also arrange to speak confidentially to your child's teacher (see above). If your concern remains unresolved it will then be passed to the Year Group Lead (then Assistant Head, Deputy Head and finally Headteacher).



How can I help at home?

Our children work incredibly hard in school and their progress is our responsibility. However, we also believe in developing strong links between home and school, and in giving pupils and parents to opportunity to learn beyond the classroom. In addition to spending time together as a family outdoors (e.g. walking, playing and gardening) and indoors (talking over dinner and playing games involving turn-taking), extra-curricular clubs and activities (e.g. sports, music, art, etc.) and taking trips, sharing stories and nursery rhymes, it would be useful if your child can independently: put on their coat, wash their hands, use the toilet (including wiping) and putting on shoes/socks.

You are your child's first educators and we greatly value any input, opinions and information you can share with us about your child. Working together as partners will set the scene for your child to thrive at Brooklands.

Once your child is at school, we send home learning once a week via the Focus on Learning in the Bulletin (see above) alongside daily reading.



How can I access Wrap Around Care?

Our onsite wraparound care (BASC), is dedicated to providing a warm, fun and stimulating environment where children can spend quality time with their friends and trusted, familiar adults outside of school hours.

Our Breakfast Club is open from 7:30am, offering a selection of breakfast options. Here the children can meet up with their friends over breakfast and get ready for the school day in a calm and welcoming atmosphere.

After School Club takes place from 3:30pm until 6pm in a variety of spaces across the school site. We offer a healthy menu for the children's afternoon snack accompanied by a range of fresh fruit and vegetables.



Perseverance

Respect

Honesty

Friendship

Children naturally live in the moment and they allow that moment to be what it is; magical and beautiful in every way

April Peerless



**Brooklands
Primary School**

Brooklands Primary School
Woodbourne Road
Sale
M33 3SY

Primary Contact – Mr Thorpe

Tel: 0161 973 3758

Email: secretary@brooklands.trafford.sch.uk

School Website: www.brooklands.trafford.sch.uk